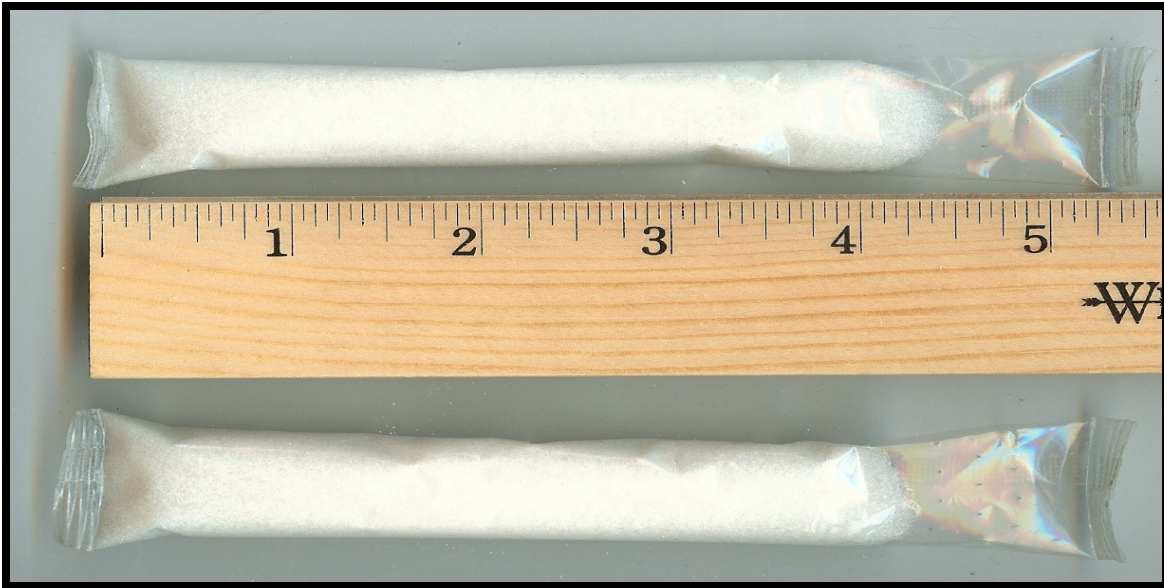


Introducing The Super-Fume Tube

**“Easy to Use Wood Pole Fumigant”
RTU - Calibrated Dose Packaging
Patent Pending**



- ▶ **The Convenience of a Borate Rod with the Efficacy of Fumigant**
- ▶ **Laser Perforated Packaging Allows For Rapid and Complete Activation and Migration of Super-Fume into the Wood**
- ▶ **17.2 Grams of Super-Fume per Tube. Each Tube Will Treat at Least Three Times as Much Wood as One 1/2" x 4" Borate Rod. Unlike Borates, Super-Fume doesn't Need Moisture to Migrate**
- ▶ **Super-Fume Efficacy Testing Demonstrates High Retentions and Long-Term Protection in Excess of 12 years**

For Additional Information Contact:

Randy S. Gross
Products Manager
(719) 685-0444
rsgross1@comcast.net